

Awards & Certifications

LONGXIN is committed to building a world-class quality management system guided by the highest industry standards. The company has been recognized as a National "Little Giant" Enterprise specializing in precision, professionalism, and innovation, a National High-Tech Enterprise, and a recipient of the First Prize for High-Tech Progress Awards. LONGXIN has also been awarded the titles of Engineering Technology Research Center, Specialized and Innovative SME, and Industry Leader in Niche Markets, and has obtained ISO Quality Management System certification. In product and technology innovation, LONGXIN has secured over 230 utility model and design patents, demonstrating strong and sustained innovation capabilities.



Manufacturing Capabilities



Longxin Laser Co., Ltd.

+86 19928257516

info@longxinlaser.com

www.longxinlaser.com

Foshan Headquarters Production Base: No. 16 Xi'an Road, Danzao Town, Nanhai District, Foshan, Guangdong, China

Sanshui Production Base: No. 86 Baijin Avenue, Baini Town, Sanshui District, Foshan, Guangdong, China

YRD Production Base: No. 1 Fengnan Road, Xiangcheng District, Suzhou, Jiangsu, China

Jinan Production Base: No. 557 Mingxu Street, Zhangqiu District, Jinan, Shandong, China



Website

OUR VALUES: CUSTOMER FIRST



Sheet Metal Laser Cutting Solutions

About Us

Founded in 2008, LONGXIN specializes in intelligent laser cutting machines. The company integrates R&D, manufacturing, and sales, and is recognized as a National "Little Giant" Enterprise for Specialized and Innovative Manufacturing in the industrial machine tool sector.

LONGXIN focuses on breakthroughs in critical core technologies. By building dedicated professional teams, the company has successfully advanced key innovations in laser tube cutting control systems, full-stroke chuck systems, and five-axis laser cutting heads, delivering automated and digitalized intelligent laser equipment solutions for users.



Foshan Headquarters Production Base

Foshan Sanshui Production Base

YRD Production Base

Global Service Centers
50+

Awards & Certifications
100+

Patents & Technologies
230+

Strategic Partners
30000+

Countries & Regions Served
100+

Manufacturing Facilities
4+



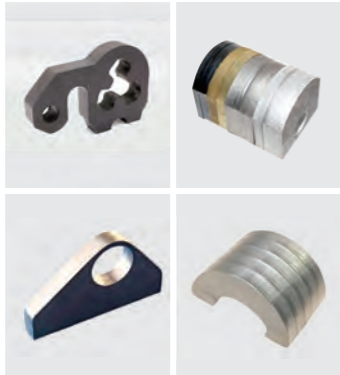
LX-A12ProMax Ultra-Large Format Laser Cutting Machine



LX-A16ProMax Ultra-Large Format Laser Cutting Machine

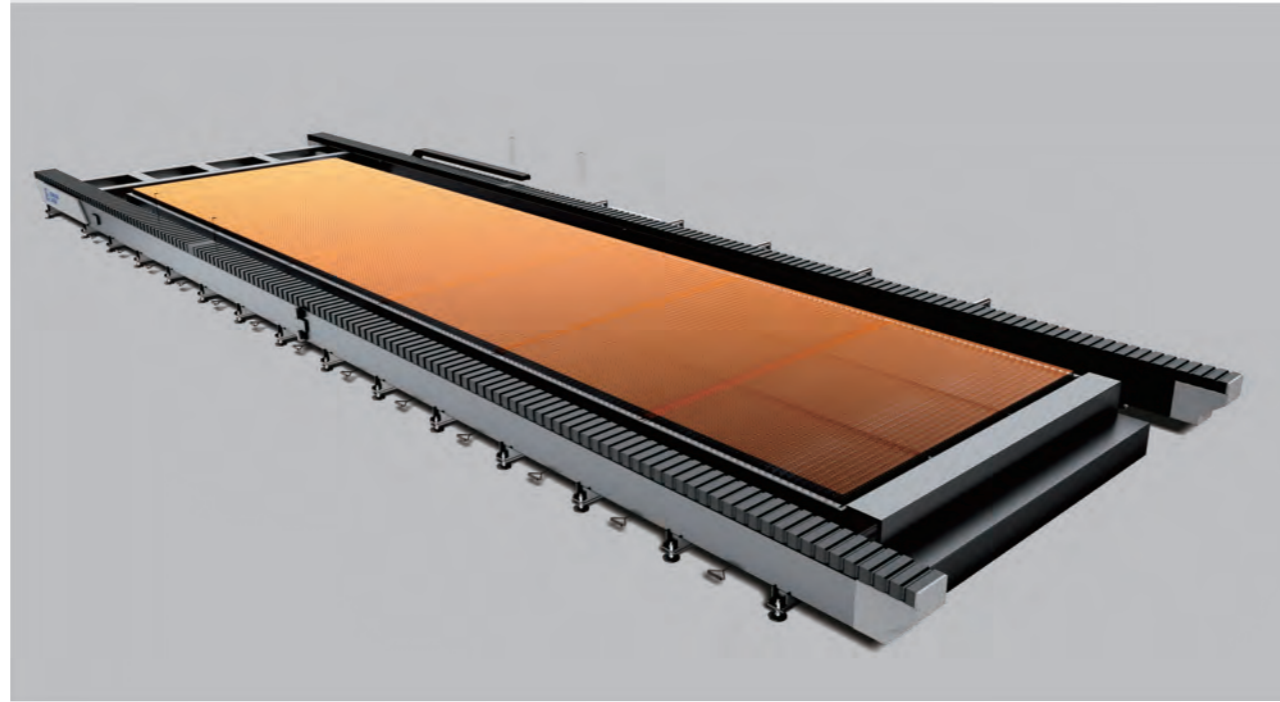


Model	LX-A12ProMax	LX-A16ProMax
Power	12000-60000W	12000-60000W
Working area	3250×12300mm	3250×16300mm
Repeatability	±0.05mm/m	±0.05mm/m
Maximum acceleration	0.5G	0.5G
Maximum speed	50m/min	50m/min
Weight	≈5300kg	≈5900kg
Dimensions	≈17150×5600×2500mm	≈21350×5600×2500mm



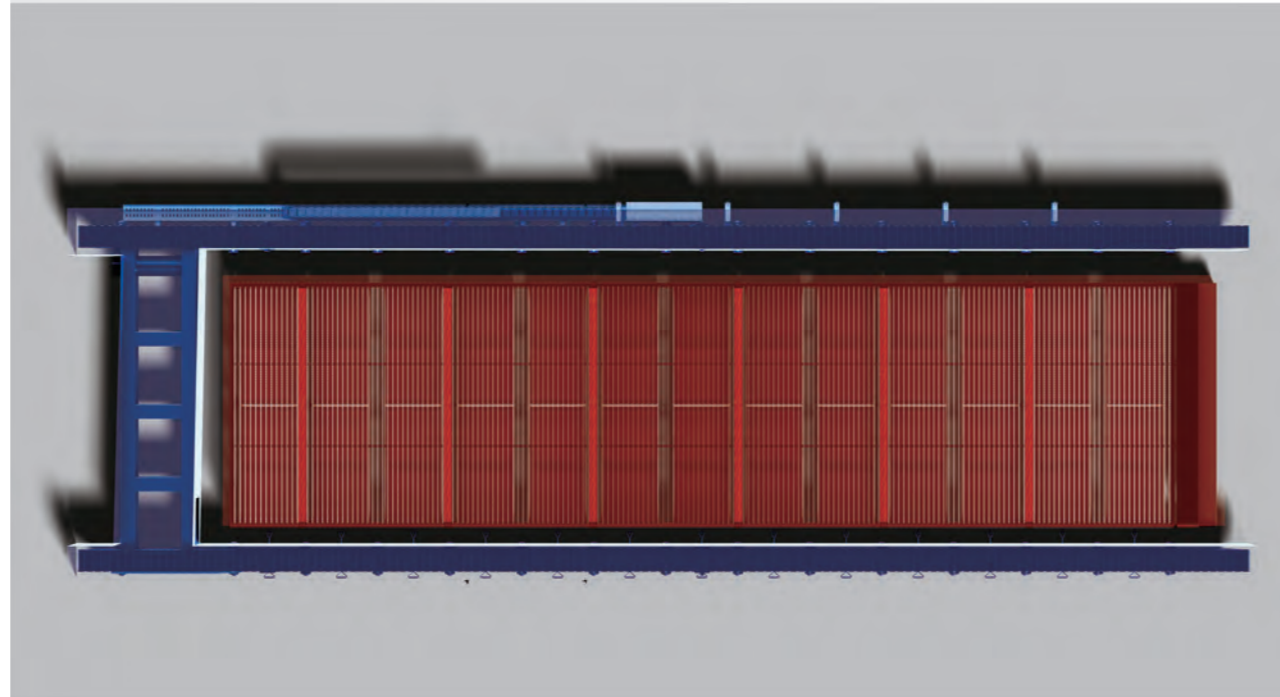
Ultra-Large Format with Flexible Customization

> Meets diverse working area requirements with customizable formats on demand.



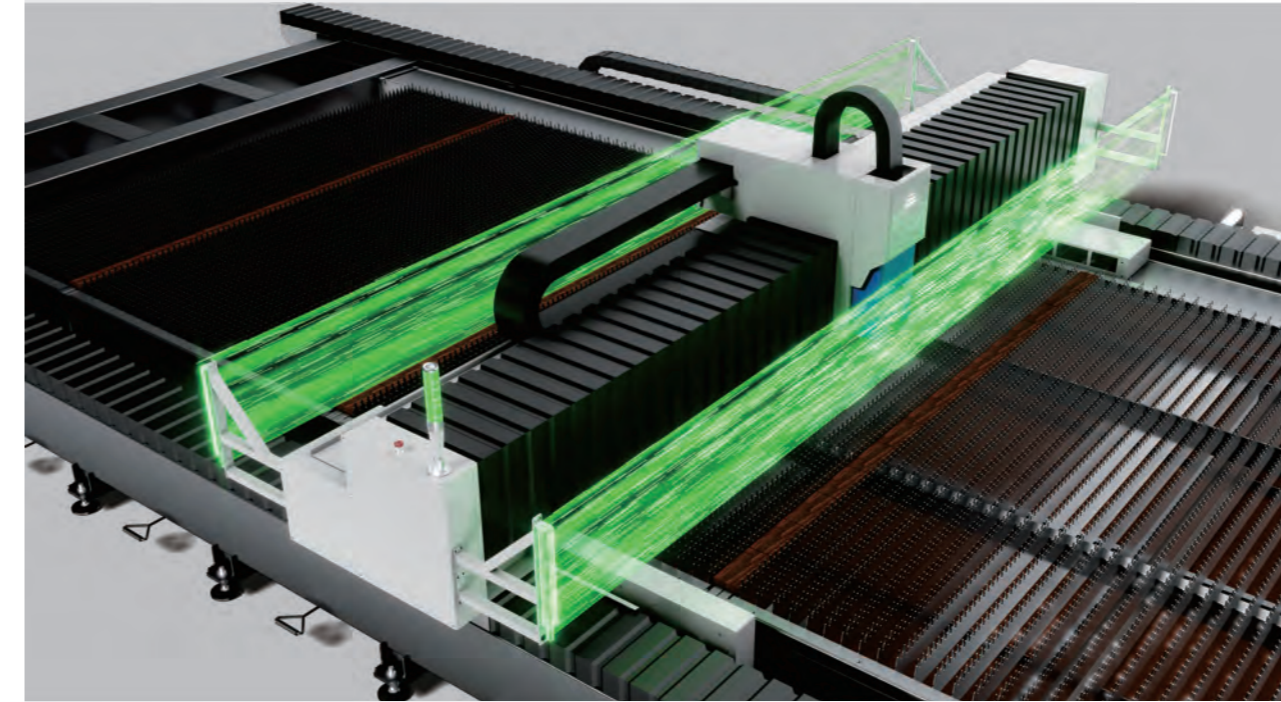
Separated Load Design for Stability

> A separated worktable-machine bed design isolates heat transfer, ensuring machining accuracy and operational stability.



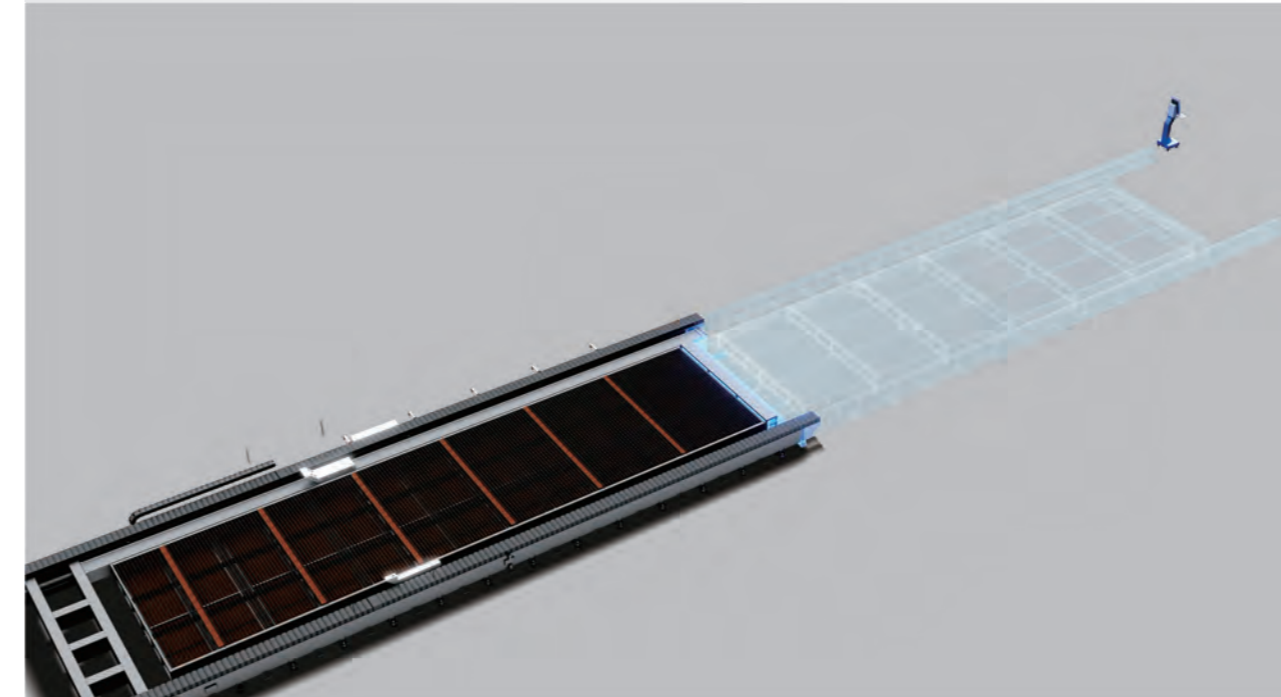
Dual Safety Light Curtain Protection

> Real-time detection and early warning provide dual protection for personnel and equipment.



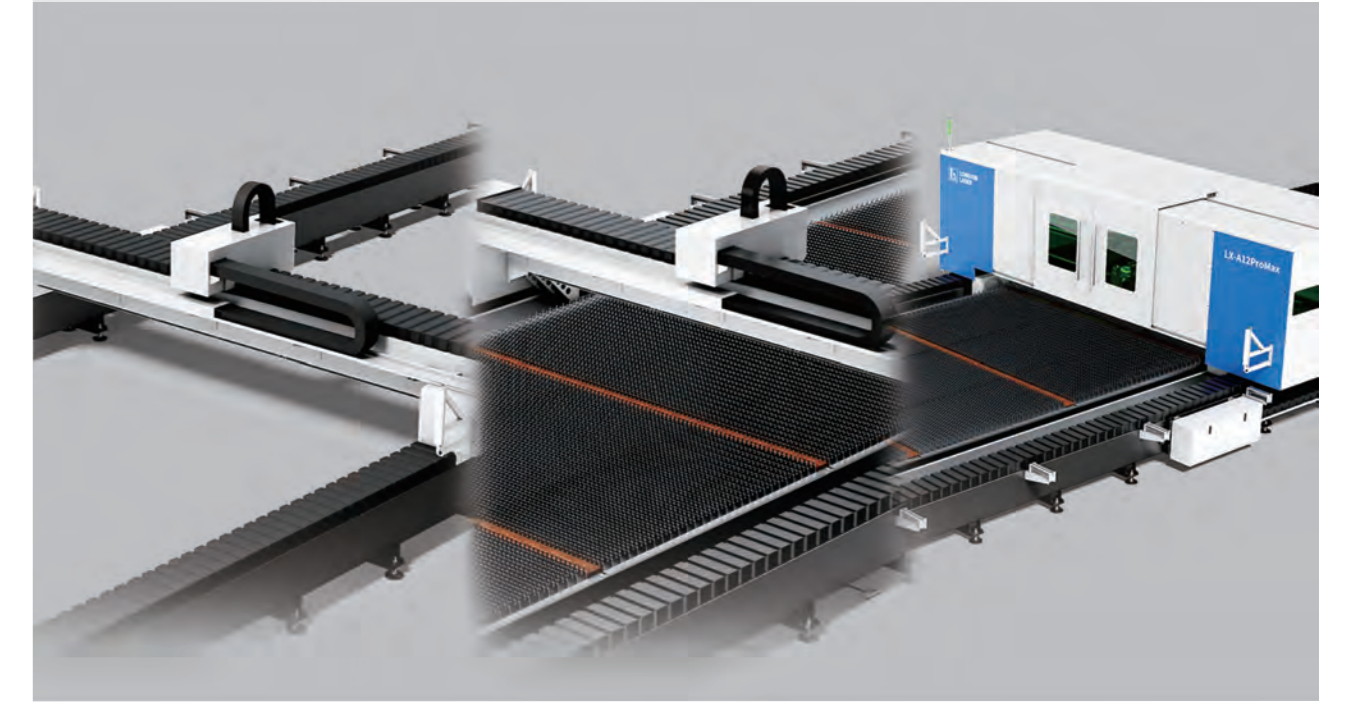
Modular Design for Maximum Expandability

> The machine bed and worktable adopt a modular assembly design, enabling scalable working length.



Bevel Cutting with Flexible Configuration

> Supports optional bevel cutting and laser protection for the crossbeam, meeting diverse processing requirements.



Real-Time Dust Extraction System

> The extraction inlet moves synchronously with the cutting head to efficiently capture dust at the point of generation.

